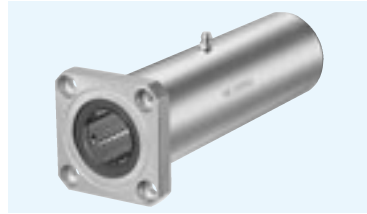
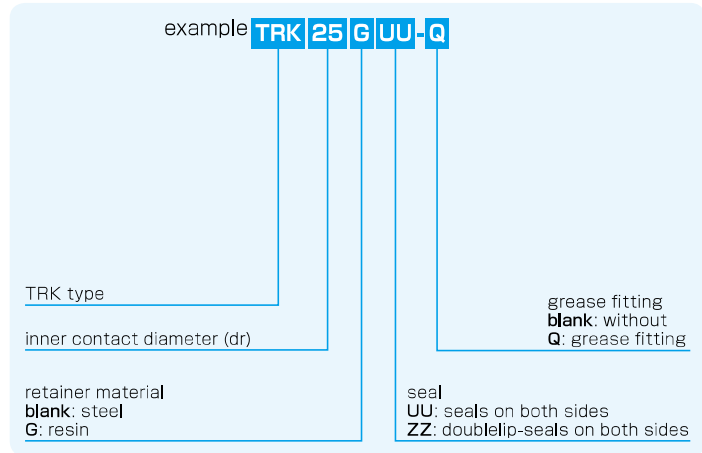


# TRK TYPE

– Triple-Wide Square Flange Type –



## part number structure



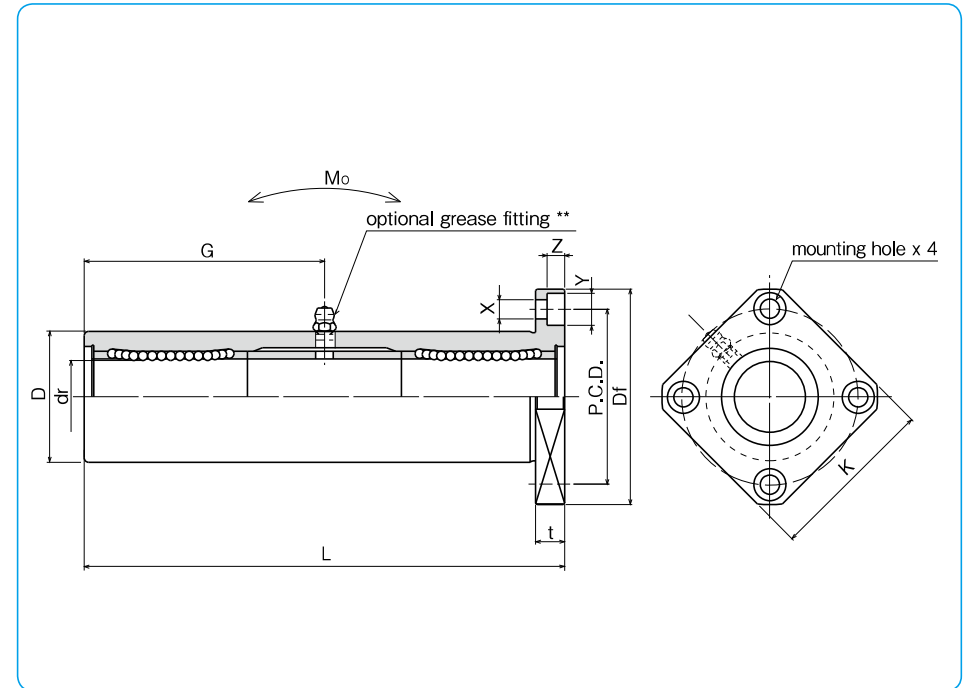
Doublelip-seal is available for size 6 to 30.

part number*		number of ball circuits	dr		major dimensions		
steel retainer	resin retainer		mm	tolerance $\mu\text{m}$	D	tolerance $\mu\text{m}$	L $\pm 0.3$ mm
TRK 6UU	TRK 6GUU	4	6		15	0/-18	51
TRK 8UU	TRK 8GUU	4	8	0	19		66
TRK 10UU	TRK 10GUU	4	10	-12	23	0	80
TRK 12UU	TRK 12GUU	4	12		26	-21	84
TRK 13UU	TRK 13GUU	4	13	0	28		90
TRK 16UU	TRK 16GUU	4	16	-15	32		103
TRK 20UU	TRK 20GUU	5	20	0	40	0	118
TRK 25UU	TRK 25GUU	6	25	-18	45	-25	165
TRK 30UU	TRK 30GUU	6	30		52	0	182
TRK 35UU	TRK 35GUU	6	35	0	60	-30	200
TRK 40UU	TRK 40GUU	6	40	-21	65		230
TRK 50UU	TRK 50GUU	6	50		85	0	290
TRK 60UU	TRK 60GUU	6	60	0/-25	100	-35	310

Outer cylinder is treated with electroless nickel plating.

\* Seals-on-both-sides is standard.

\*\* TRK6: A-MT6x1 TRK8: A-M6x1 TRK10~30: A-M6F TRK35~60: A-R1/8



Df mm	flange				grease fitting G mm	eccentricity $\mu\text{m}$	perpendicularity $\mu\text{m}$	basic load rating			allowable static moment $\text{N}\cdot\text{m}$	mass g	shaft diameter mm
	K mm	t mm	P.C.D. mm	X×Y×Z mm				dynamic C N	static Co N	Mo N·m			
32	25	5	24	3.5×6×3.1	20.5	20	20	323	530	8.2	58	6	
40	30	6	29	4.5×7.5×4.1	29			431	784	16.0	117	8	
43	34	6	33	4.5×7.5×4.1	38			588	1,100	27.0	189	10	
46	35	6	36	4.5×7.5×4.1	41			813	1,570	40.1	228	12	
48	37	6	38	4.5×7.5×4.1	45			813	1,570	42.9	286	13	
54	42	8	43	5.5×9×5.1	51			1,230	2,350	73.5	376	16	
62	50	8	51	5.5×9×5.1	59	25	25	1,400	2,740	98.0	714	20	
74	58	10	60	6.6×11×6.1	82.5			1,560	3,140	157	1,163	25	
82	64	10	67	6.6×11×6.1	91			2,490	5,490	297	1,543	30	
96	75	13	78	9×14×8.1	100			2,650	6,270	373	2,400	35	
101	80	13	83	9×14×8.1	115	30	30	3,430	8,040	553	2,510	40	
129	100	18	107	11×17×11.1	145			6,080	15,900	1,370	6,400	50	
144	116	18	122	11×17×11.1	155			7,550	20,000	1,800	9,200	60	

1N≐0.102kgf 1N·m≐0.102kgf·m